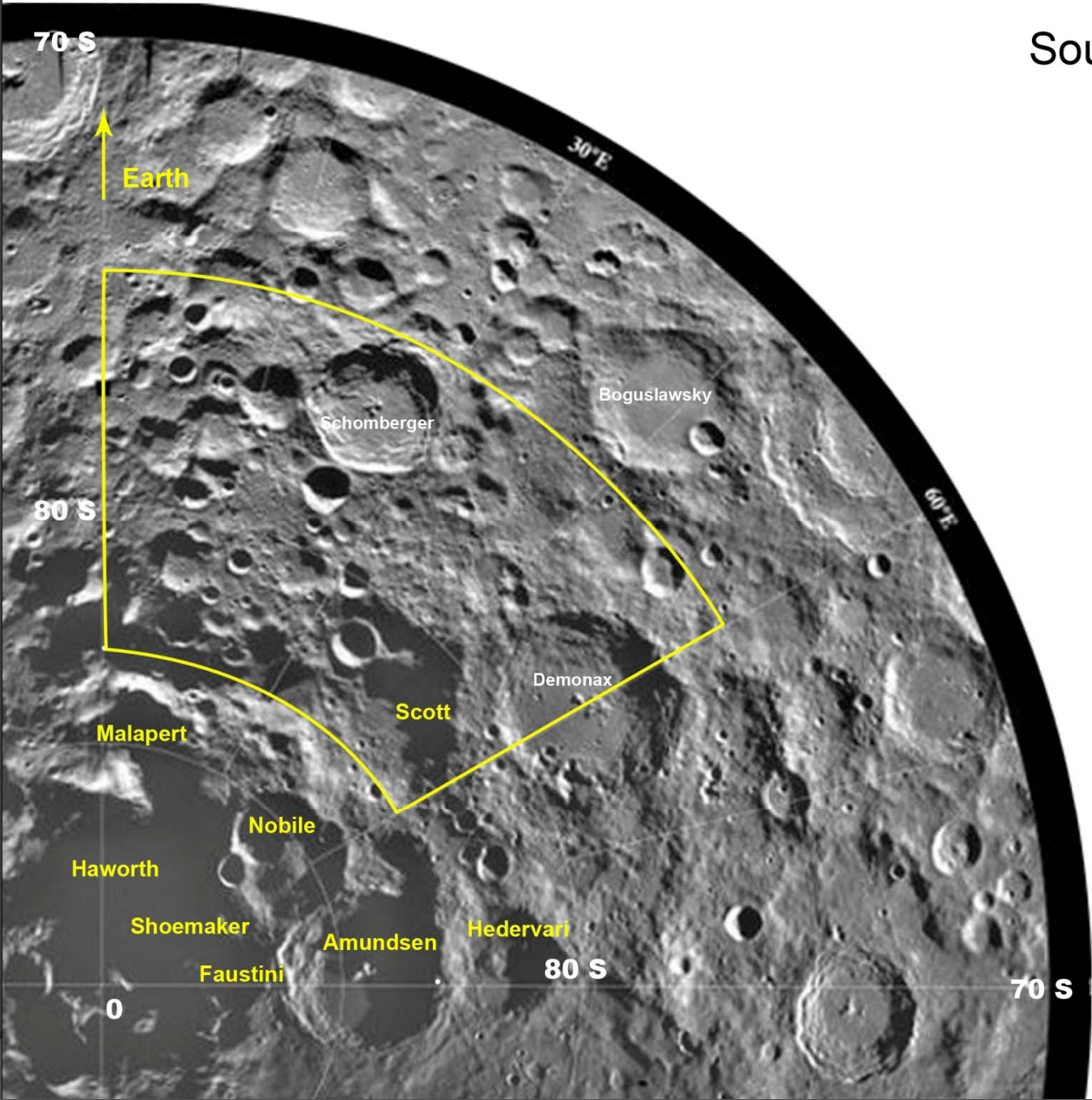


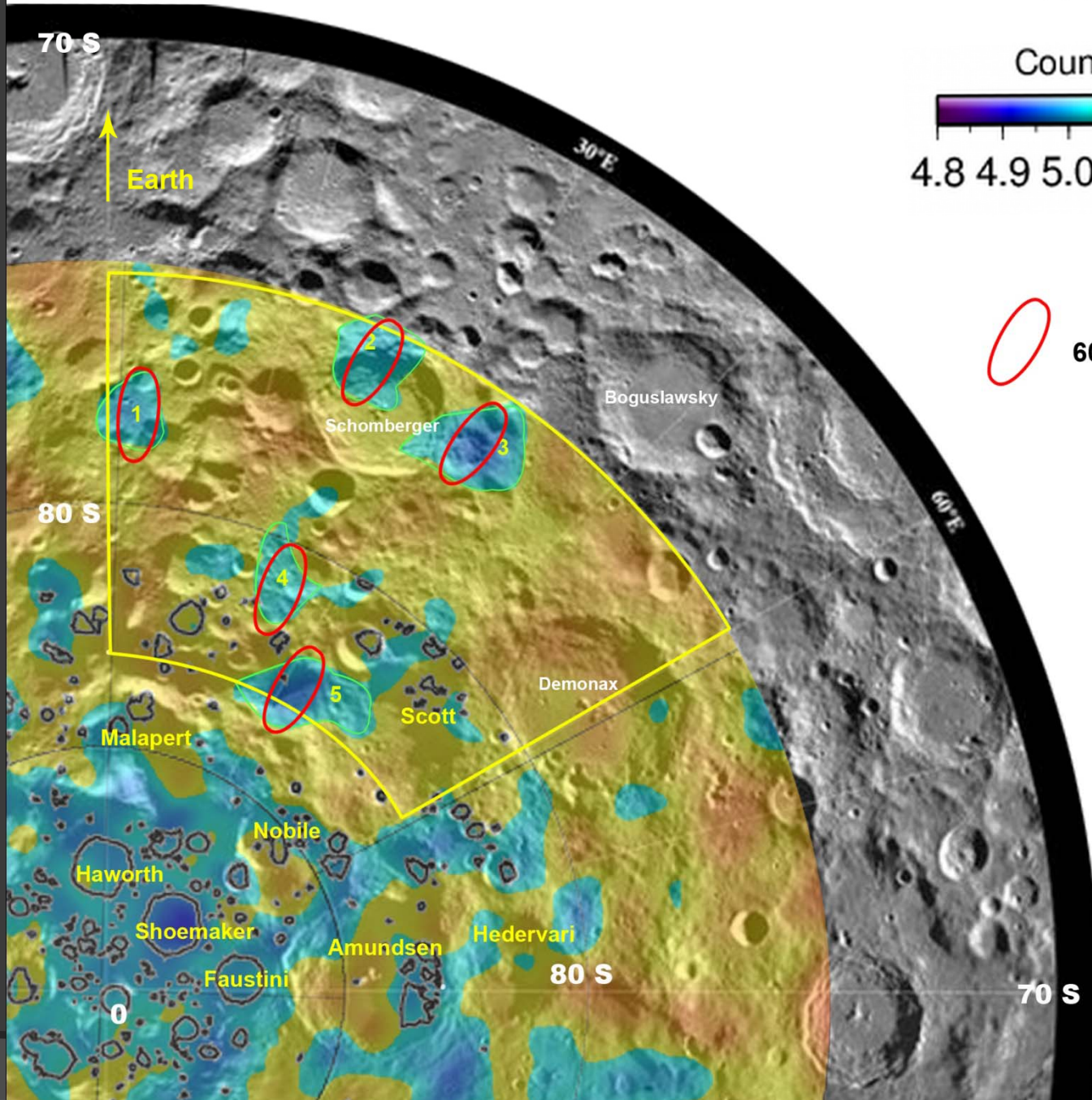
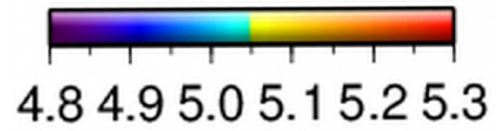
**МЕТОДИКА ИССЛЕДОВАНИЯ
ПРЕДПОЛАГАЕМЫХ МЕСТ
ПОСАДКИ ЛУНА-ГЛОБ, ЛУНА-
РЕСУРС**

South Polar

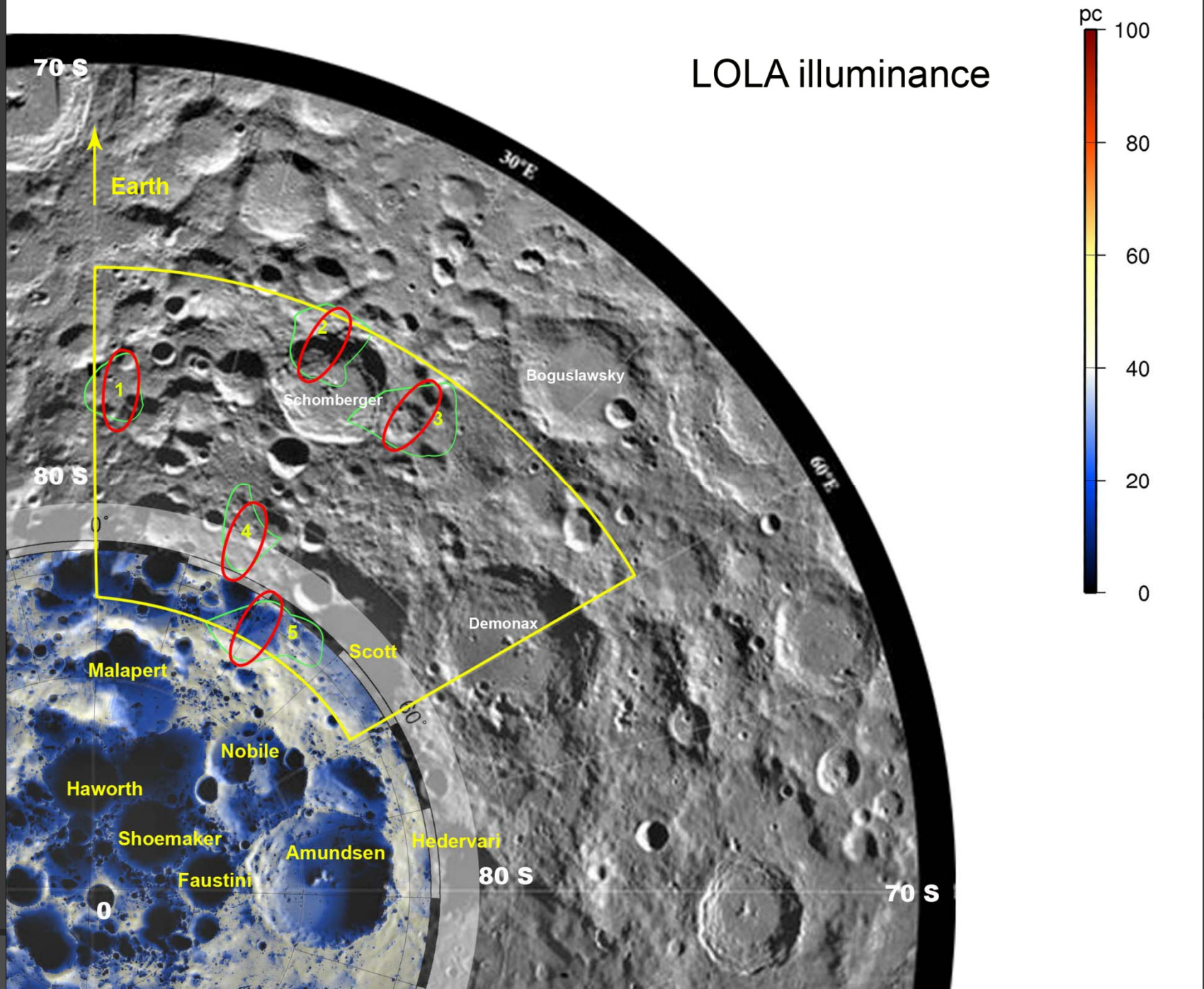


LEND

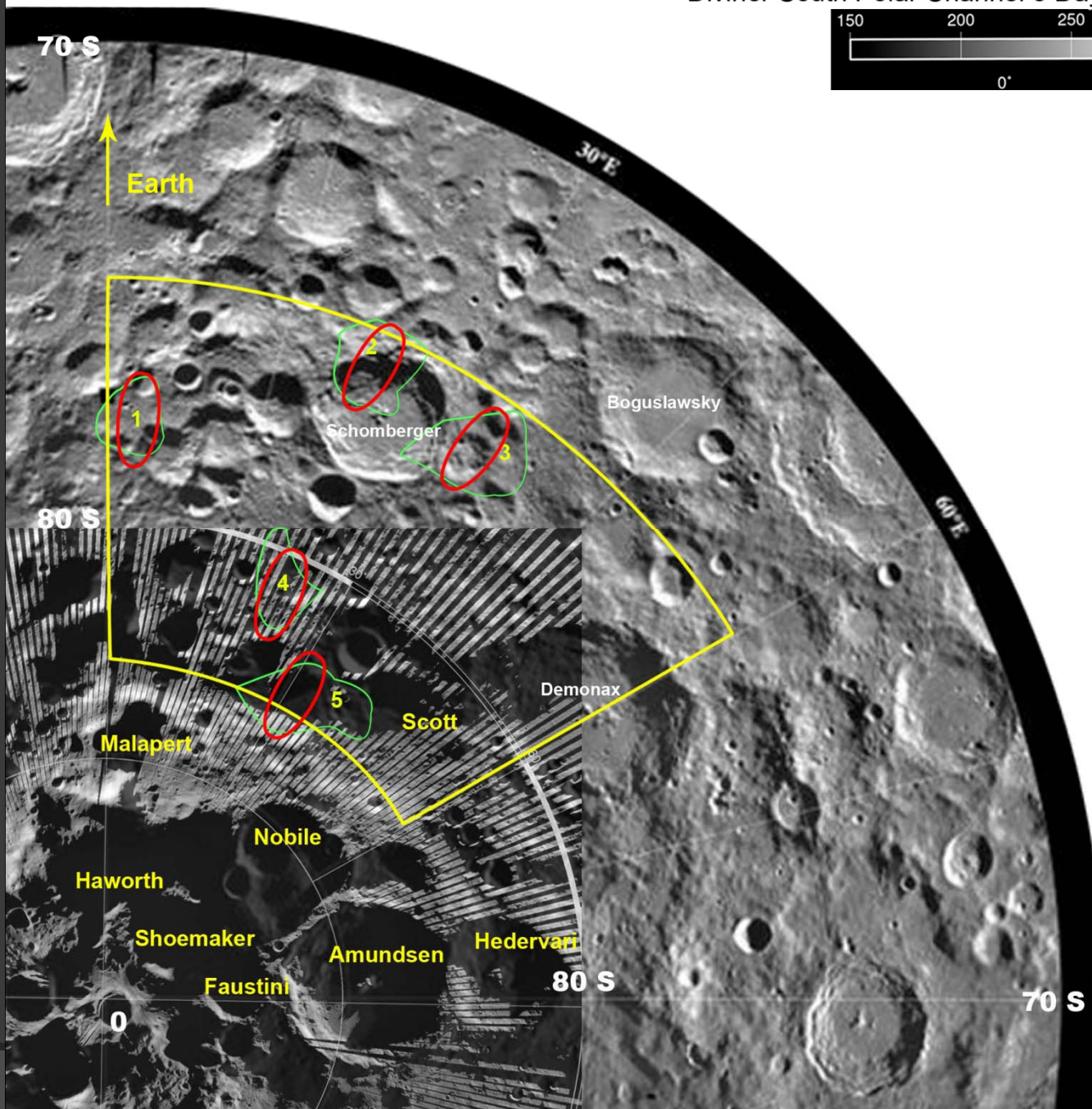
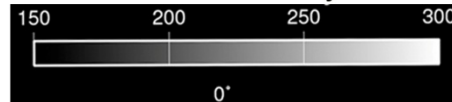
Count Rate



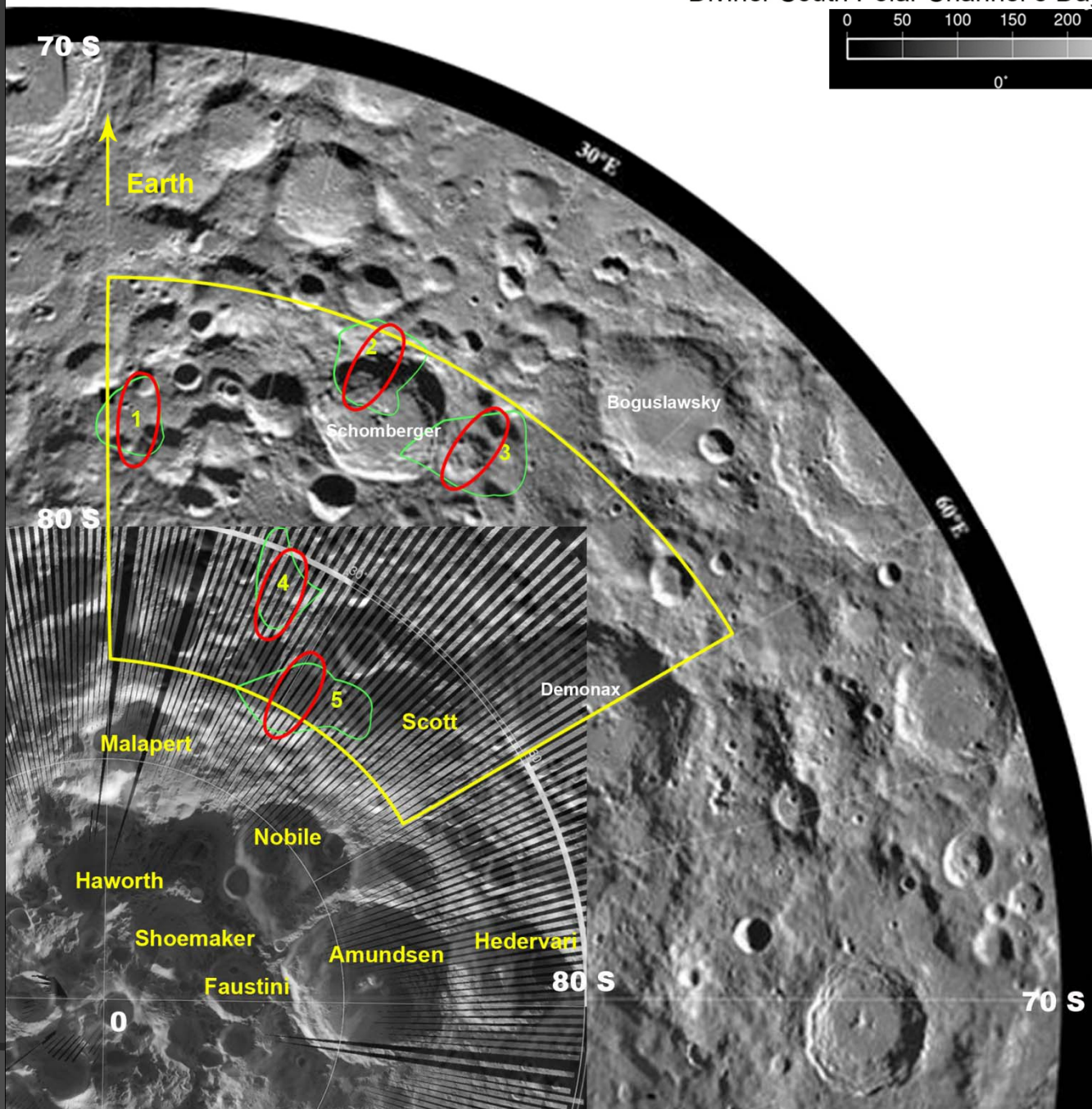
LOLA illuminance



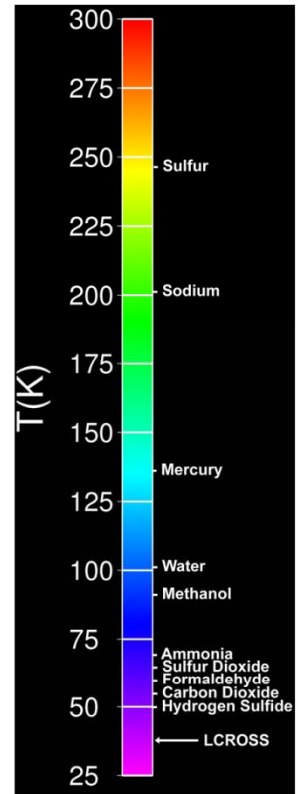
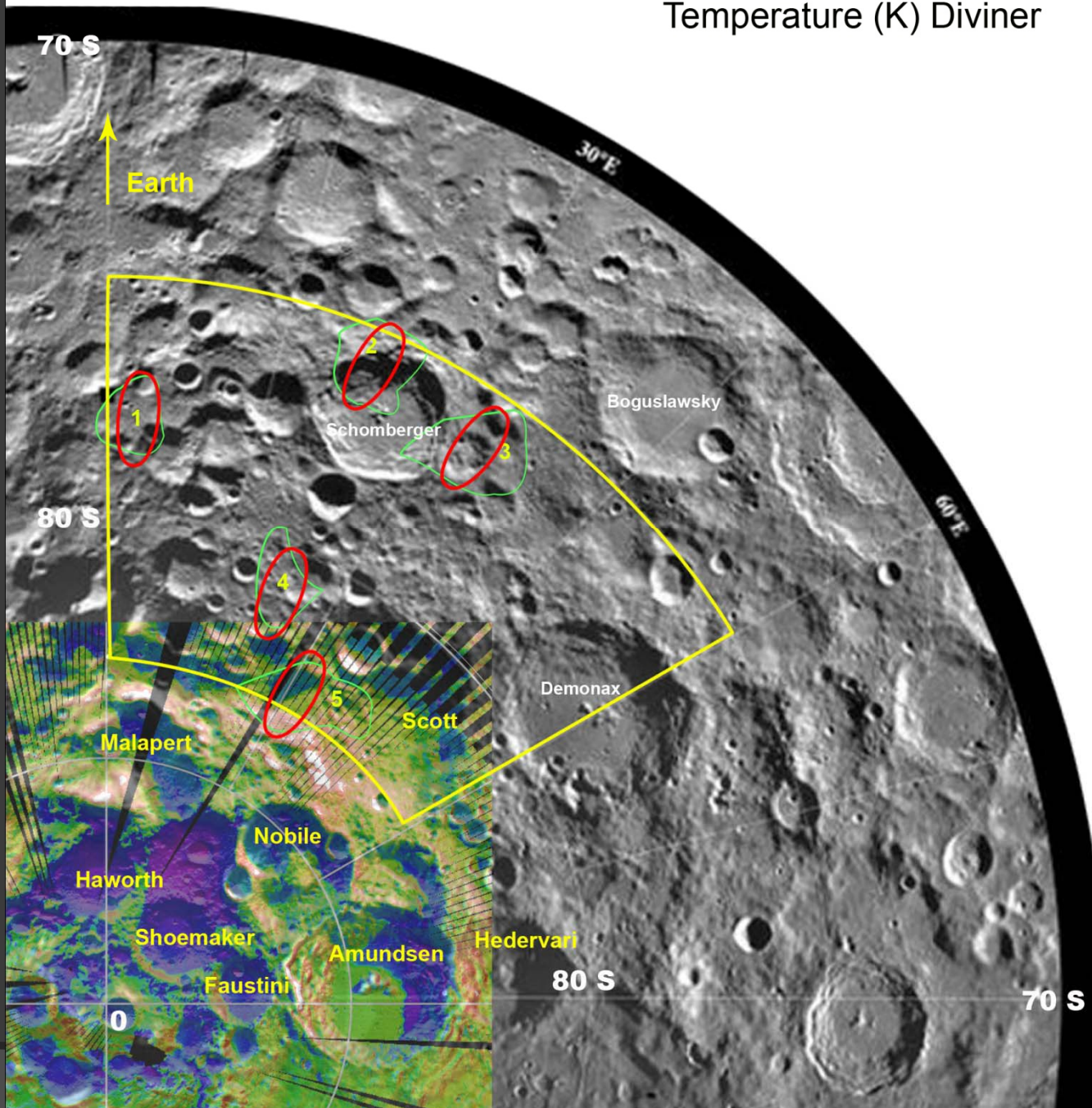
Diviner South Polar Channel 3 Daytime Temperature (K)



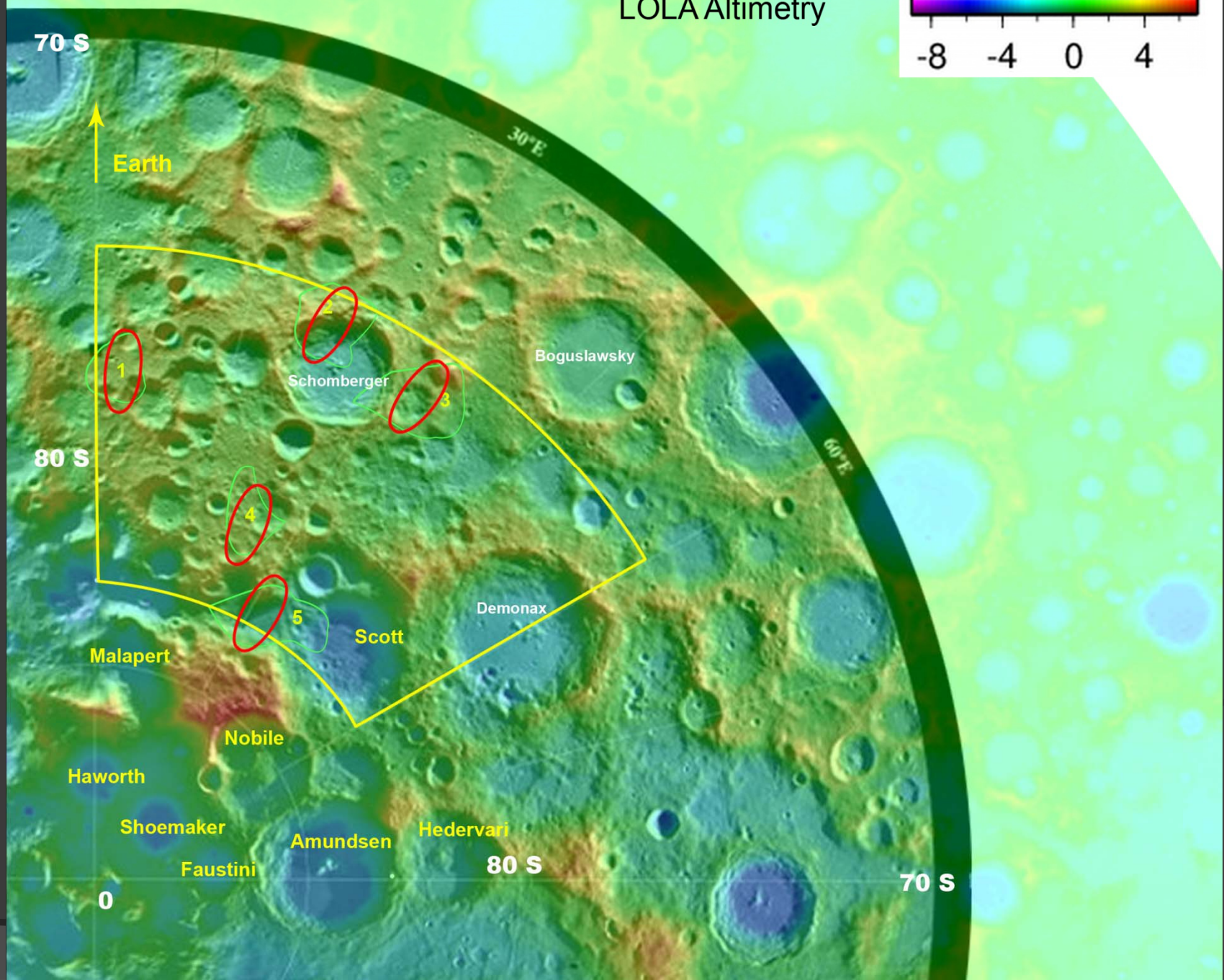
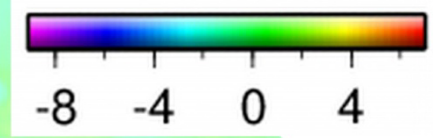
Diviner South Polar Channel 8 Daytime Temperature (K)



Temperature (K) Diviner

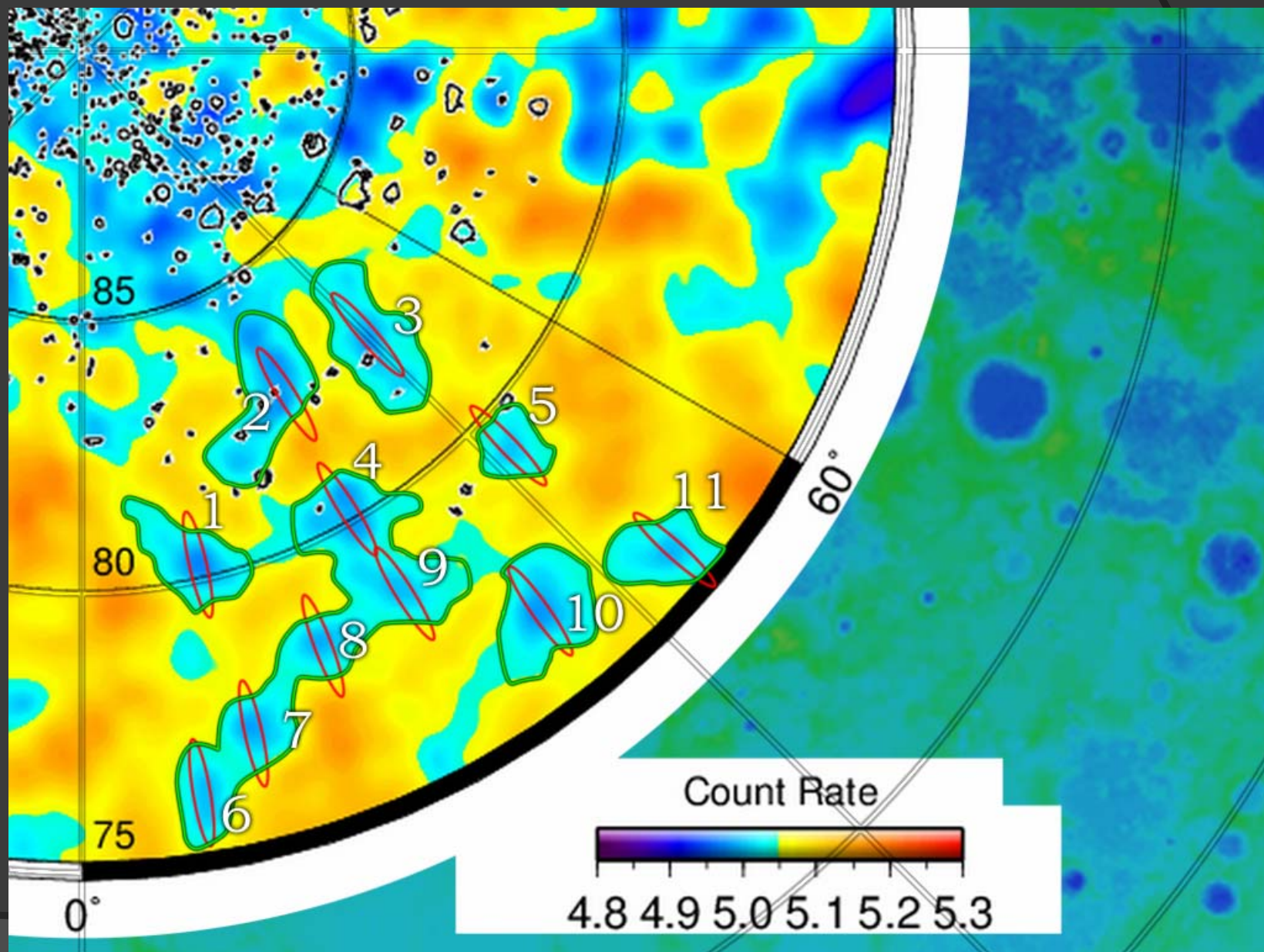


LOLA Altimetry

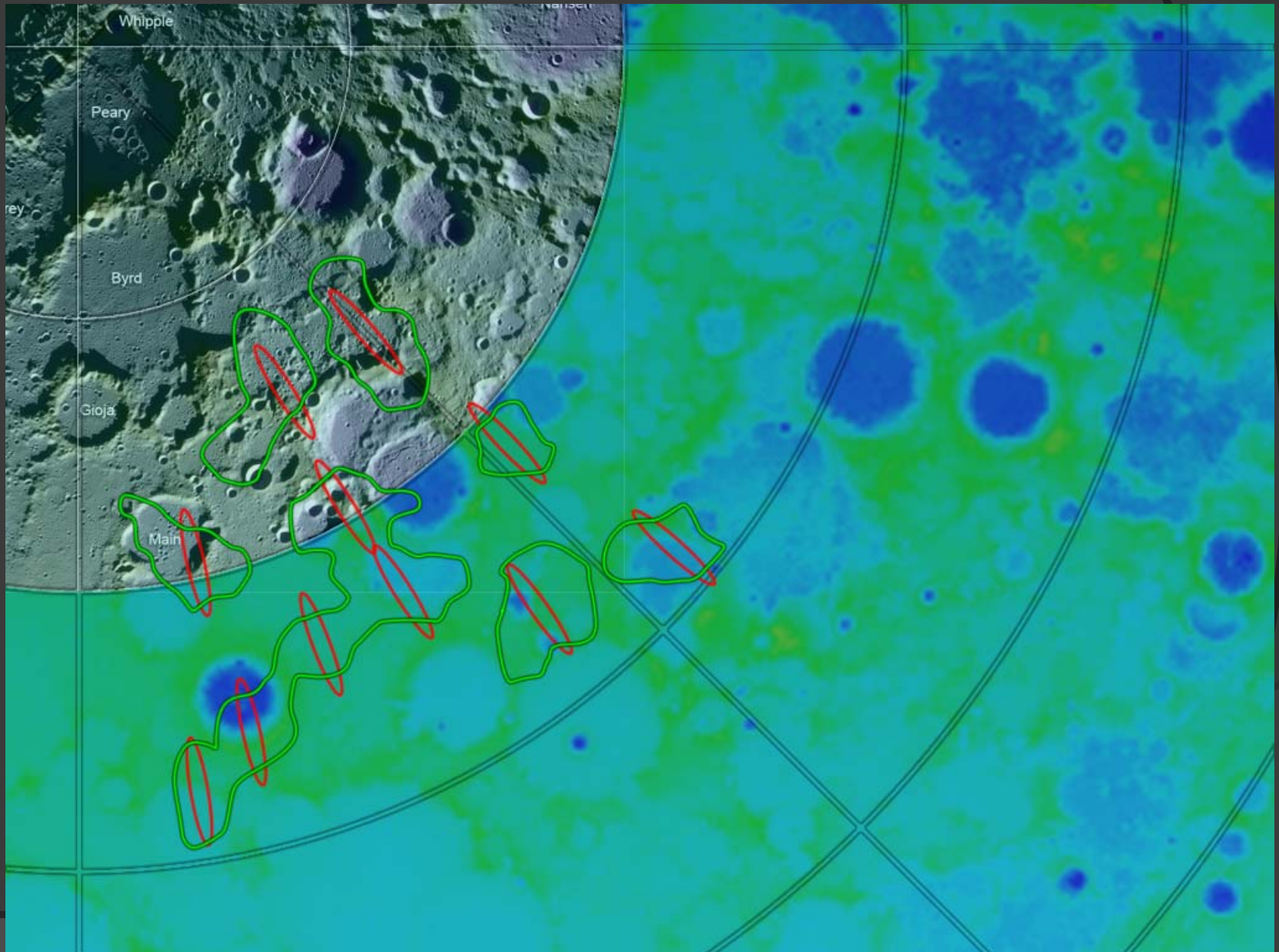


Точка посадки	LEND	temp 3	temp 8	illum	geologic map	topography	
1	4	unknown	unknown	unknown	primary impact craters and their secondary craters, probably basin-related materials	5	
2	4	unknown	unknown	unknown	primary impact craters and their secondary craters	2	
3	5	unknown	unknown	unknown	primary impact craters and their secondary craters	3	
4	3	middle	middle	unknown	primary impact craters and their secondary craters, probably basin-related materials, basin materials	5	
5	5	low	low	middle	basin materials	2	

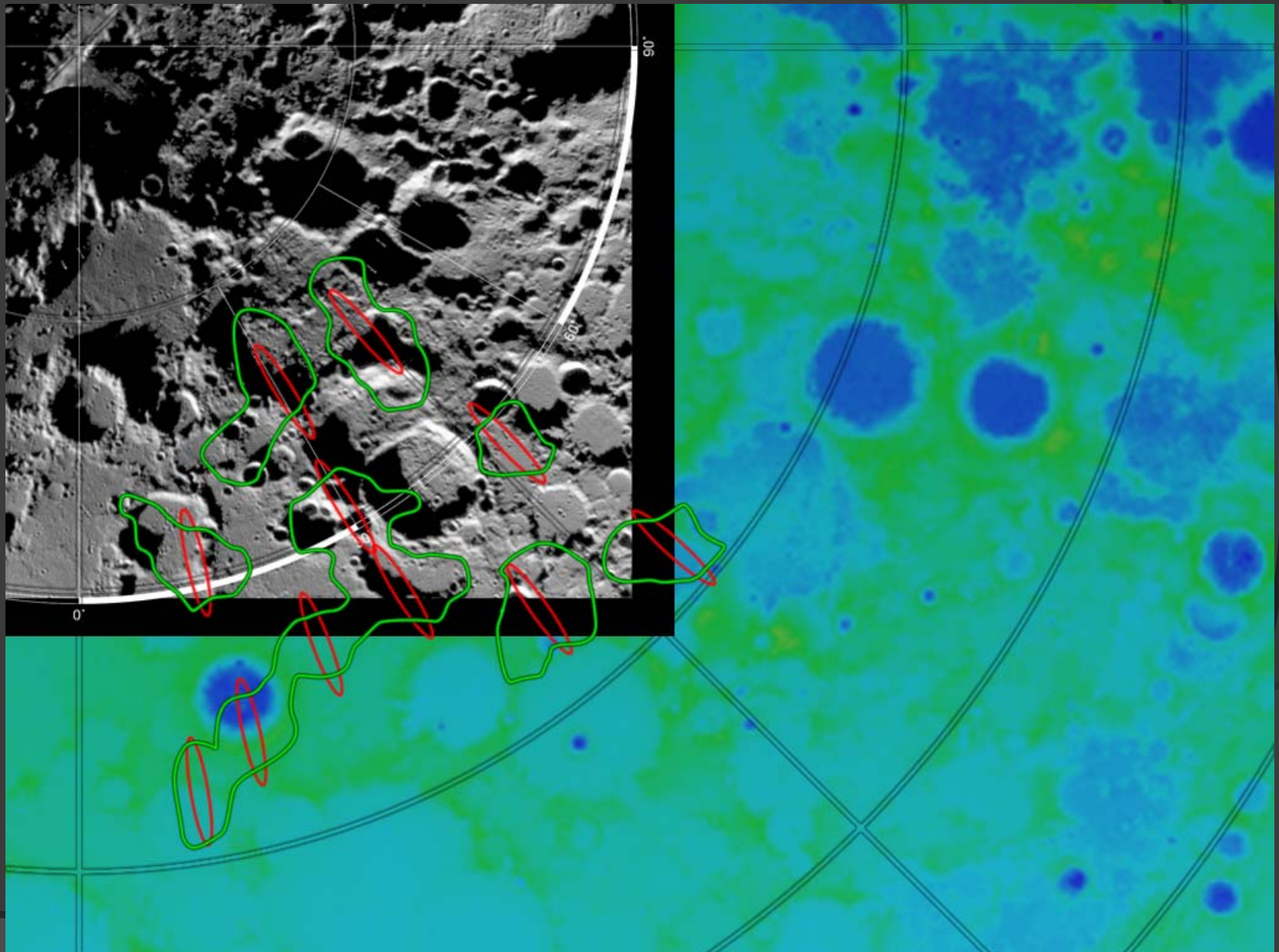
North polar. LEND



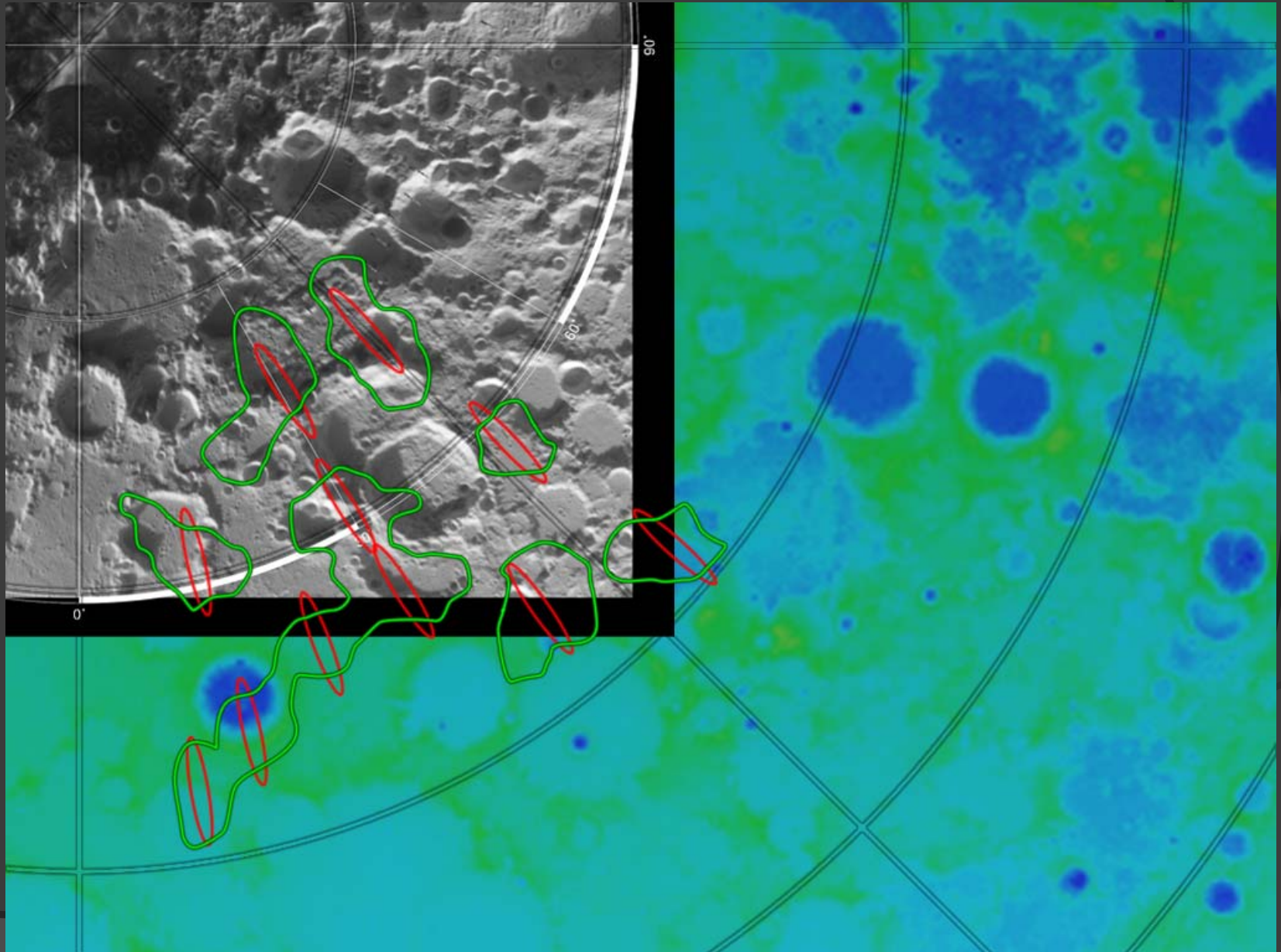
LOLA Altimetry



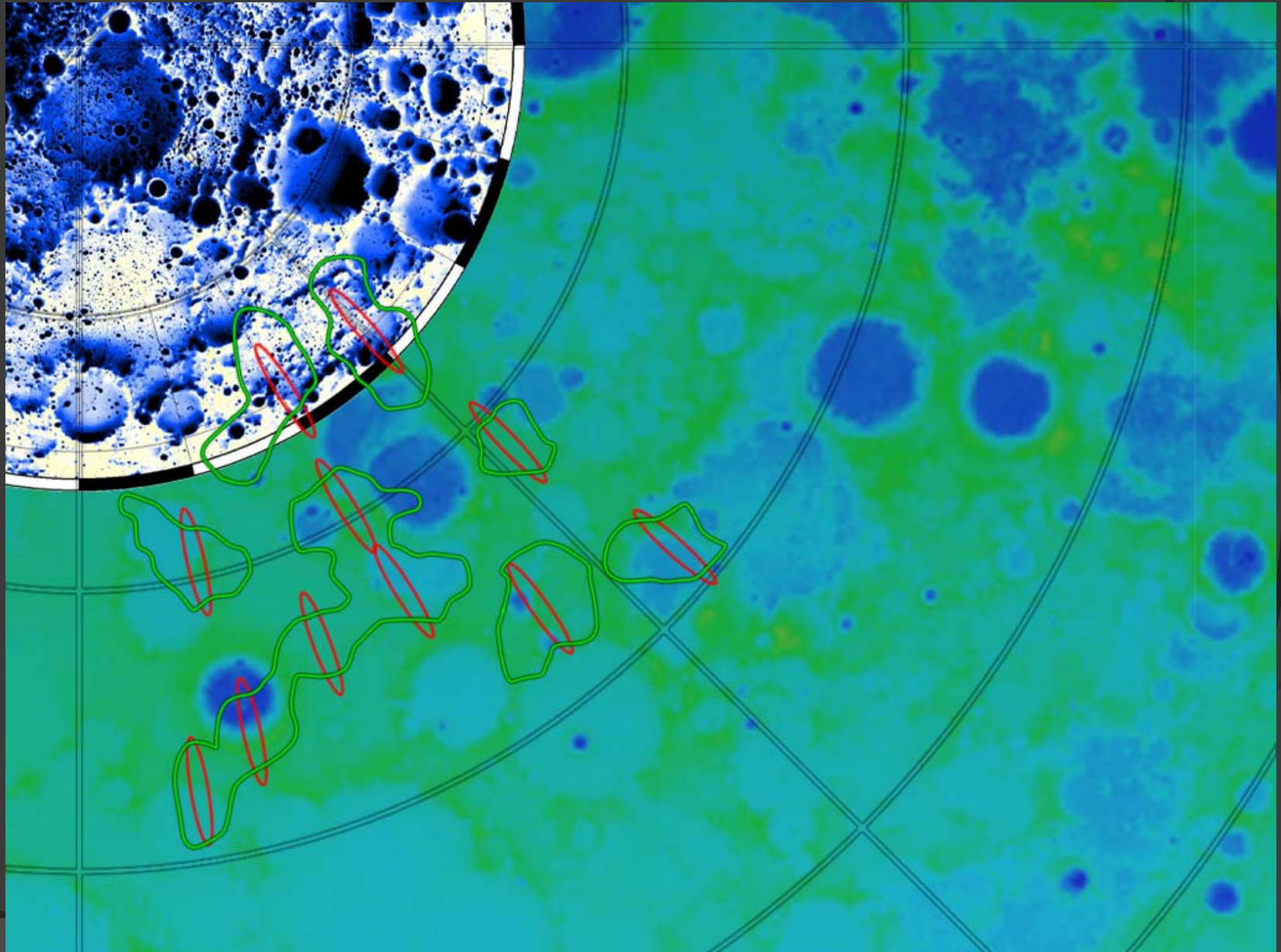
Diviner. 3 daytime temperature



Diviner. 8 daytime temperature



LOLA illuminance



	Точка посадки	LEND	temp 3	temp 8	illum	geologic map	topography
	1	5	high	high	unknown	primary impact craters and their secondary craters, probably basin-related materials	4
	2	5	low	low	middle	probably basin-related materials	5
	3	3	middle	middle	middle	primary impact craters and their secondary craters, probably basin-related materials, basin materials	5
	4	5	middle	middle	unknown	basin materials, primary impact craters and their secondary craters	3
	5	2	high	high	unknown	primary impact craters and their secondary craters, probably basin-related materials	~5
	6	3	unknown	unknown	unknown	primary impact craters and their secondary craters	~4
	7	4	unknown	unknown	unknown	primary impact craters and their secondary craters	~3
	8	3	unknown	unknown	unknown	primary impact craters and their secondary craters	~4
	9	3	middle	middle	unknown	primary impact craters and their secondary craters, probably basin-related materials, basin materials	~3
	10	4	unknown	unknown	unknown	basin materials	~4
	11	3	unknown	unknown	unknown	primary impact craters and their secondary craters, probably basin-related materials	~3